

Орбитальные шейкеры Orbit LS/1900/1000

Технические характеристики

По вопросам продаж и поддержки обращайтесь:

Алматы (727)345-47-04
Ангарск (3955)60-70-56
Архангельск (8182)63-90-72
Астрахань (8512)99-46-04
Барнаул (3852)73-04-60
Белгород (4722)40-23-64
Благовещенск (4162)22-76-07
Брянск (4832)59-03-52
Владивосток (423)249-28-31
Владикавказ (8672)28-90-48
Владимир (4922)49-43-18
Волгоград (844)278-03-48
Вологда (8172)26-41-59
Воронеж (473)204-51-73
Екатеринбург (343)384-55-89

Иваново (4932)77-34-06
Ижевск (3412)26-03-58
Иркутск (395)279-98-46
Казань (843)206-01-48
Калининград (4012)72-03-81
Калуга (4842)92-23-67
Кемерово (3842)65-04-62
Киров (8332)68-02-04
Коломна (4966)23-41-49
Кострома (4942)77-07-48
Краснодар (861)203-40-90
Красноярск (391)204-63-61
Курск (4712)77-13-04
Курган (3522)50-90-47
Липецк (4742)52-20-81

Магнитогорск (3519)55-03-13
Москва (495)268-04-70
Мурманск (8152)59-64-93
Набережные Челны (8552)20-53-41
Нижний Новгород (831)429-08-12
Новокузнецк (3843)20-46-81
Ноябрьск (3496)41-32-12
Новосибирск (383)227-86-73
Омск (3812)21-46-40
Орел (4862)44-53-42
Оренбург (3532)37-68-04
Пенза (8412)22-31-16
Петрозаводск (8142)55-98-37
Псков (8112)59-10-37
Пермь (342)205-81-47

Ростов-на-Дону (863)308-18-15
Рязань (4912)46-61-64
Самара (846)206-03-16
Санкт-Петербург (812)309-46-40
Саратов (845)249-38-78
Севастополь (8692)22-31-93
Саранск (8342)22-96-24
Симферополь (3652)67-13-56
Смоленск (4812)29-41-54
Сочи (862)225-72-31
Ставрополь (8652)20-65-13
Сургут (3462)77-98-35
Сыктывкар (8212)25-95-17
Тамбов (4752)50-40-97
Тверь (4822)63-31-35

Тольятти (8482)63-91-07
Томск (3822)98-41-53
Тула (4872)33-79-87
Тюмень (3452)66-21-18
Ульяновск (8422)24-23-59
Улан-Удэ (3012)59-97-51
Уфа (347)229-48-12
Хабаровск (4212)92-98-04
Чебоксары (8352)28-53-07
Челябинск (351)202-03-61
Череповец (8202)49-02-64
Чита (3022)38-34-83
Якутск (4112)23-90-97
Ярославль (4852)69-52-93

Россия +7(495)268-04-70

Казахстан +(727)345-47-04

Беларусь +(375)257-127-884

Узбекистан +998(71)205-18-59

Киргизия +996(312)96-26-47

эл.почта: aqd@nt-rt.ru || сайт: <https://labnet.nt-rt.ru/>

Orbit™ 1000 Multipurpose Digital Shaker

Four platform configurations allow the Orbit 1000 Digital Shaker to meet a variety of shaking and mixing applications. Single and double flat platforms hold trays, plates, and dishes. The double platform allows for expansion of the shaker capacity without increasing the footprint. The universal platform has spring loaded bars that adjust to fit flasks, bottles, tube racks, and odd shaped containers. Pre-drilled to hold Erlenmeyer flask clamps (sold separately), the flask platform is ideal for mixing and growing cultures. Platforms are easily removable and interchangeable.

A powerful brushless motor and counter balanced shaker mechanism provide smooth operation and years of trouble-free use. Speed and time are set with the single knob, while the set and current values are displayed digitally. Speed is adjustable over a broad range to allow for applications such as staining and destaining gels, growth of bacterial cultures, and hybridization. The Orbit 1000 Digital Shaker is safe for use in temperature controlled environments. Platforms sold separately.



Specifications

| | |
|-------------------------|---|
| Speed range | 20 to 300 rpm |
| Capacity | 4 x 1L, 5 x 500 mL, 9 x 250 mL, 16 x 125 mL |
| Maximum load | 9 lbs. (4 kg) |
| Timer | 30 sec. to 99 min. 50 sec. in 10-second steps (under 10 min. in 1-second steps) or continuous |
| Motion, orbit size | Circular, 19 mm |
| Ambient operating range | 5°C to 40°C, up to 85% RH, non-condensing |
| Dimensions (W x D x H) | 10.3 x 13.3 x 5.1 in. (26.2 x 33.7 x 13 cm) |
| Weight | 16 lbs. (7.3 kg) |

Ordering Information

| Cat. No. | Description |
|------------------|---|
| S2030-1000-B | Orbit 1000 Digital Shaker, without platform, 120V |
| S2030-1000-B-230 | Orbit 1000 Digital Shaker, without platform, 230V, EU and UK plug |

Accessories

| Cat. No. | Description |
|-----------|---|
| S2031-12 | Flat platform with non-slip rubber mat, 30 x 30 cm |
| S2031-12D | Flat double platform with non-slip rubber mat, 30 x 30 cm |
| S2031-13 | Spring loaded platform for flasks, bottles or tube racks |
| S2031-18 | Flask clamp platform without clamps |
| S2040-25 | Clamp for 25 mL Erlenmeyer flask (max. 16) |
| S2040-50 | Clamp for 50 mL Erlenmeyer flask (max. 16) |
| S2040-85 | Clamp for 125 mL Erlenmeyer flask (max. 16) |
| S2040-99 | Clamp for 250 mL Erlenmeyer flask (max. 9) |
| S2040-09 | Clamp for 500 mL Erlenmeyer flask (max. 5) |
| S2040-01 | Clamp for 1,000 mL Erlenmeyer flask (max. 4) |



Flat platform with non-slip rubber mat (Cat. No. S2031-12)



Spring loaded platform (Cat. No. S2031-13)

Orbit™ 1900 High Capacity Shaker

The Orbit 1900 Shaker is designed for continuous use and heavy loads. Its solid construction and counter balanced drive system provide vibration-free operation. Operation of the shaker can be timed or continuous, while the speed is variable. Both time and speed are set digitally with a single knob.

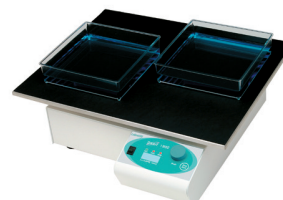
Three heavy-duty stainless steel platforms are available to accommodate a variety of different sizes of sample containers. The flat platform is useful for trays, plates, boxes, and other containers. A non-slip mat on the platform surface keeps items in place. Flasks are held on the flask platform through the use of clamps (sold separately). As many as five 2L or six 1L flasks can be shaken on the platform. A universal bar clamp platform adjusts to hold odd shaped containers.

- Suitable for use in an incubator or cold room
- Large, three-digit LED display



Specifications

| | |
|-------------------------|---|
| Speed range | 25 to 300 rpm |
| Maximum load | 22 lbs. (10 kg) |
| Timer | 30 sec. to 99 min. 50 sec. in 10-second steps (under 10 min. in 1-second steps) or continuous |
| Motion, orbit size | Circular, 19 mm |
| Ambient operating range | 5°C to 40°C, up to 85% RH, non-condensing |
| Dimensions (W x D x H) | 15.3 x 18.3 x 6.2 in. (39 x 46.5 x 16 cm) |
| Weight | 68.35 lbs. (31 kg) |



Ordering Information

| Cat. No. | Description |
|-----------------|---|
| S2040-1900 | Orbit 1900 Digital Shaker, without platform, 120V |
| S2040-1900-230V | Orbit 1900 Digital Shaker, without platform, 230V, EU and UK plug |

Accessories

| Cat. No. | Description |
|----------|--|
| S2040-12 | Flat platform with nonslip mat (40 x 50 cm) |
| S2040-15 | Universal bar clamp platform for holding a variety of containers |
| S2040-18 | Platform for flask clamps (clamps sold separately) |
| S2040-25 | Clamp for 25 mL Erlenmeyer flask (max. 28) |
| S2040-50 | Clamp for 50 mL Erlenmeyer flask (max. 28) |
| S2040-85 | Clamp for 125 mL Erlenmeyer flask (max. 28) |
| S2040-99 | Clamp for 250 mL Erlenmeyer flask (max. 20) |
| S2040-09 | Clamp for 500 mL Erlenmeyer flask (max. 10) |
| S2040-01 | Clamp for 1L Erlenmeyer flask (max. 6) |
| S2040-02 | Clamp for 2L Erlenmeyer flask (max. 5) |

Orbit™ LS Low Speed Shaker

The Orbit LS Low Speed Shaker is a high quality, general purpose shaker with economical analog control.

Styled after the other models in the line, the Orbit LS features a streamlined, compact design with an easy-access control panel. Electronic controls are utilized for setting speed and time. The knobs used for selecting parameters turn easily and are clearly marked with corresponding values.

A large orbit and low speed make the Orbit LS useful for staining and destaining gels, washing blots, and general mixing. The shaker is supplied with a 30 x 30 cm stainless steel flat platform and non-slip rubber mat to keep plates, dishes, and other sample containers in place.

- ▶ Safe for use in temperature-controlled environments
- ▶ The small profile of this shaker makes it ideal for use in incubators



Specifications

| | |
|-----------------------------|---|
| Speed range | 3 to 60 rpm |
| Maximum load | 11 lbs. (5 kg) |
| Timer | 20 to 120 min. in 10 min. step or continuous |
| Motion, orbit size | Circular, 19 mm |
| Platform dimensions (W x D) | 11.6 x 11.6 in. (29.5 x 29.5 cm) useable area |
| Ambient operating range | 4°C to 65°C, up to 85% RH, non-condensing |
| Dimensions (W x D x H) | 11.6 x 13.4 x 6.3 in. (29.5 x 34 x 16 cm) |
| Weight | 14.5 lbs. (6.6 kg) |

Ordering Information

| Cat. No. | Description |
|-----------------|--|
| S2030-LS-B | Orbit LS Low Speed Orbital Shaker with flat platform, 120V |
| S2030-LS-B-230V | Orbit LS Low Speed Orbital Shaker with flat platform, 230V, EU and UK plug |

Accessories

| Cat. No. | Description | Qty/Pk |
|-----------|--|--------|
| S2031-12D | Stacked platforms (29.5 x 29.5 cm) | 2 |
| E2110-BBS | Blot box, 9.1 x 6.6 cm, 3-50 mL capacity for mini protein gels | 10 |
| E2110-BBL | Blot box, 11.7 x 8.9 cm, 6-10 mL capacity for larger mini protein gels | 10 |

По вопросам продаж и поддержки обращайтесь:

Алматы (727)345-47-04
Ангарск (3955)60-70-56
Архангельск (8182)63-90-72
Астрахань (8512)99-46-04
Барнаул (3852)73-04-60
Белгород (4722)40-23-64
Благовещенск (4162)22-76-07
Брянск (4832)59-03-52
Владивосток (423)249-28-31
Владикавказ (8672)28-90-48
Владимир (4922)49-43-18
Волгоград (844)278-03-48
Вологда (8172)26-41-59
Воронеж (473)204-51-73
Екатеринбург (343)384-55-89

Иваново (4932)77-34-06
Ижевск (3412)26-03-58
Иркутск (395)279-98-46
Казань (843)206-01-48
Калининград (4012)72-03-81
Калуга (4842)92-23-67
Кемерово (3842)65-04-62
Киров (8332)68-02-04
Коломна (4966)23-41-49
Кострома (4942)77-07-48
Краснодар (861)203-40-90
Красноярск (391)204-63-61
Курск (4712)77-13-04
Курган (3522)50-90-47
Липецк (4742)52-20-81

Магнитогорск (3519)55-03-13
Москва (495)268-04-70
Мурманск (8152)59-64-93
Набережные Челны (8552)20-53-41
Нижний Новгород (831)429-08-12
Новокузнецк (3843)20-46-81
Ноябрьск (3496)41-32-12
Новосибирск (383)227-86-73
Омск (3812)21-46-40
Орел (4862)44-53-42
Оренбург (3532)37-68-04
Пенза (8412)22-31-16
Петрозаводск (8142)55-98-37
Псков (8112)59-10-37
Пермь (342)205-81-47

Ростов-на-Дону (863)308-18-15
Рязань (4912)46-61-64
Самара (846)206-03-16
Санкт-Петербург (812)309-46-40
Саратов (845)249-38-78
Севастополь (8692)22-31-93
Саранск (8342)22-96-24
Симферополь (3652)67-13-56
Смоленск (4812)29-41-54
Сочи (862)225-72-31
Ставрополь (8652)20-65-13
Сургут (3462)77-98-35
Сыктывкар (8212)25-95-17
Тамбов (4752)50-40-97
Тверь (4822)63-31-35

Тольятти (8482)63-91-07
Томск (3822)98-41-53
Тула (4872)33-79-87
Тюмень (3452)66-21-18
Ульяновск (8422)24-23-59
Улан-Удэ (3012)59-97-51
Уфа (347)229-48-12
Хабаровск (4212)92-98-04
Чебоксары (8352)28-53-07
Челябинск (351)202-03-61
Череповец (8202)49-02-64
Чита (3022)38-34-83
Якутск (4112)23-90-97
Ярославль (4852)69-52-93

Россия +7(495)268-04-70

Казахстан +(727)345-47-04

Беларусь +(375)257-127-884

Узбекистан +998(71)205-18-59

Киргизия +996(312)96-26-47

эл.почта: aqd@nt-rt.ru || сайт: <https://labnet.nt-rt.ru/>